

**JYO**  
IMPORTACIONES

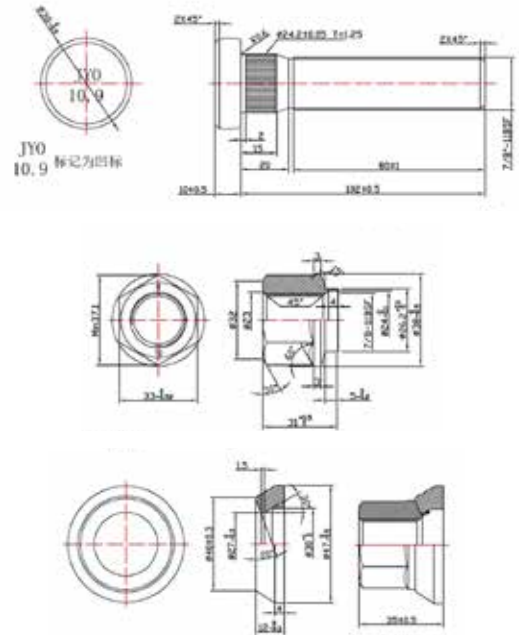
CATÁLOGO DE  
**PRODUCTOS**

*Repuestos para camiones  
de gran variedad, calidad y  
resistencia.*





**PERNO DE RUEDA - Delantero**



**TAMBOR DE FRENO EJE FRONTAL**



**CÓDIGO 2378715**

Posición de montaje	Eje frontal
Peso	52 Kg
Diámetro del tambor	413 mm
Diámetro del agujero	23.5 mm
Diámetro del círculo del agujero del perno	335 mm
Diámetro del perno del cubo	295 mm
Superficie de freno	214 mm
Número de agujeros	10
Material	Acero

**TAMBOR DE FRENO EJE POSTERIOR**



**CÓDIGO 2378716**

Posición de montaje	Eje posterior
Peso	82 Kg
Diámetro del tambor	413 mm
Diámetro del agujero	23.5 mm
Diámetro del círculo del agujero del perno	335 mm
Diámetro del perno del cubo	295 mm
Superficie de freno	266 mm
Número de agujeros	10
Material	Acero

**SNAP-IN TUBELESS RUBBER  
TIRE VALVE**



**TR43E TR48E**



**TUBELESS TIRE VALVE STRAIGHT  
TYPE**



**TR161**



**PVR70 PVR60 PVR50**



**TR416SS**



**TPMS-MS525**



**PVR30 PVR32**





**FOR SPECIAL VEHICLES**



**TR525**



**MS525AL**



**TR416 SERIES**



**BENT METAL TYPE-BRASS/NICKEL/CHROME**



**CLAMP-IN METAL TIRE VALVES**



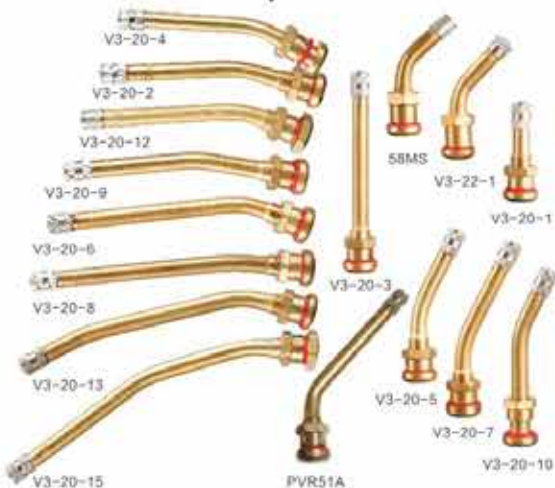
**TR500 SERIES**



HF No. (Valve NO.)	Ref./Eff. Length(mm)	Core	Rubber Grommet	Parts		
				Nut	Cap	
TR500	17*40	C1	RG30	HN4 or HN4B	VC3S	
TR501	17*48/18*	C1	RG54	HN4 or HN4B	VC3S	
TR571	16*41	C1	V9-11-5(RG60)	V9-07-2	VC3S or VC3 or VC2	
TR572	16*41	C1	V9-11-5(RG60)	V9-07-2	VC3S or VC3 or VC2	
TR573	16*90/27	C1	V9-11-5(RG60)	V9-07-2	VC3S or VC3 or VC2	
TR574	16*70/27	C1	V9-11-5(RG60)	V9-07-2	VC3S or VC3 or VC2	
TR575	16*64/60/59	C1	R060 or R054(0-176)	HN21 or HN22	VC3S or VC3 or VC2	
TR570C	16*80/27	C1	V9-11-5(RG60)	V9-07-2	VC3S or VC3 or VC2	
TR571C	16*64/60/59	C1	R060 or R054(0-176)	HN21 or HN22	VC3S or VC3 or VC2	
TR572C	16*41	C1	V9-11-5(RG60)	V9-07-2	VC3S or VC3 or VC2	
TR573C	16*115	C1	V9-11-5(RG60)	V9-07-2	VC3S or VC3 or VC2	

**TRUCK AND BUS TIRE VALVES**

**Brass/Aluminum alloy**



HF No. (ETRT)	Ref./Eff. Length(mm)	Core	Rubber Grommet	Parts		
				Nut	Cap	
V3-20-1	16*41	C1	V9-11-5(RG80)	V9-07-2	VC3S or VC3 or VC2	
V3-20-1C	16*41	C1	V9-11-5(RG80)	V9-07-2	VC3S or VC3 or VC2	
V3-20-2	16*41	C1	V9-11-5(RG60)	V9-07-2	VC3S or VC3 or VC2	
V3-20-3	16*41	C1	V9-11-5(RG60)	V9-07-2	VC3S or VC3 or VC2	
V3-20-4	16*80/27	C1	V9-11-5(RG60)	V9-07-2	VC3S or VC3 or VC2	
V3-20-5	16*70/27	C1	V9-11-5(RG60)	V9-07-2	VC3S or VC3 or VC2	
V3-20-6	16*115/27	C1	V9-11-5(RG60)	V9-07-2	VC3S or VC3 or VC2	
V3-20-7	16*80/27	C1	V9-11-5(RG60)	V9-07-2	VC3S or VC3 or VC2	
V3-20-10	16*41	C1	V9-11-5(RG60)	V9-07-2	VC3S or VC3 or VC2	
V3-20-12	16*41	C1	V9-11-5(RG60)	V9-07-2	VC3S or VC3 or VC2	
V3-20-13	16*41	C1	V9-11-5(RG60)	V9-07-2	VC3S or VC3 or VC2	
V3-22-1	16*41	C1	V9-11-5(RG80)	V9-07-2	VC3S or VC3 or VC2	
58MS	16*41	C1	V9-11-5(RG60)	V9-07-2	VC3S or VC3 or VC2	
58MSA-45	16*57/45	C1	V9-11-5(RG60)	V9-07-2	VC3S or VC3 or VC2	
PVR51A	108	C1	V9-11-5(RG60)	V9-07-2	VC3S or VC3 or VC2	

**AGRICULTURE AND OFF THE ROAD TIRE VALVES**



TR618A TR618B TR623A TR622A TR621A

**TRUCK AND BUS TIRE VALVES**



TR543 TR544D TR543C TR543D TR543E TR544C TR545D TR546D

Part No.	Eff Length(mm)	(in)	Angle Benda <sup>o</sup>	Rim/Valve Hole
TR542	32.5	1.26	-	ø9.7(.390")
TR543	59	2.31	-	ø9.7(.390")
TR543C	59	23.1	45	ø9.7(.390")
TR543D	59	2.31	60	ø9.7(.390")
TR543E	59	2.31	75	ø9.7(.390")
TR544	73	2.86	-	ø9.7(.390")
TR544D	73	2.86	60	ø9.7(.390")
TR544E	73	2.86	75	ø9.7(.390")
TR545	89	3.50	-	ø9.7(.390")
TR545B	89	3.50	26	ø9.7(.390")
TR545C	89	3.5	36	ø9.7(.390")
TR545D	89	3.50	60	ø9.7(.390")
TR545E	89	3.50	75	ø9.7(.390")
TR546	108	4.25	-	ø9.7(.390")
TR546B	108	4.25	26	ø9.7(.390")
TR546C	108	4.25	36	ø9.7(.390")
TR546D	108	4.25	60	ø9.7(.390")
TR546E	108	4.25	75	ø9.7(.390")
TR547D	119	4.70	60	ø9.7(.390")



**AGRICULTURE AND OFF THE ROAD TIRE VALVES**



TRJ4000-4 TRJ850-03 TRJ851-03



TRJ652-03 TRJ653-03 TRJ654-03 TRJ657-03



TRJ655-03 TRJ669-03 TRJ670-03 TRSP2 TRJ650-02



TRJ670-02 TRJ650-03 TRJ660-03

Hf No. (Valve NO.)	ETRTO NO. (REF. NO.)	A(mm/in)	B(mm/in)	α°
TRJ650-03	V5-04-1	27/1.08	79/3.12	80
TRJ651-03	V5-04-2	32/1.27	119/4.69	90
TRJ652-03	-	27/1.08	140/5.50	86
TRJ653-03	-	27/1.08	64/2.50	80
TRJ654-03	-	27/1.08	79/3.12	70
TRJ655-03	-	27/1.08	102/4.00	90
TRJ656-03	-	67/2.62	64/2.50	90
TRJ657-03	-	27/1.08	102/4.00	80
TRJ658-03	-	27/1.08	140/5.5	100
TRJ659-03	-	48/1.89	89/3.5	90
TRJ660-03	-	48/1.89	225/6.75	90
TRJ669-03	-	27/1.08	64/2.50	90
TRJ670-03	V5-03-1	41/1.63	-	STR

**EUROPEAN STYLE CLAMP-IN VALVES**



Hf No. (TR No.)	D	E	α°	β°
V3-19-1	92	14.5	154	147
V3-19-2	76	15	152	145
V3-19-4	91	10	162	155

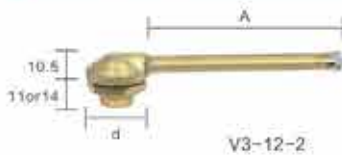


**TRIPLE BEND TUBELESS VALVES**



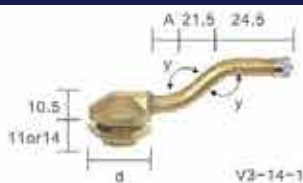
HF No.(TR No.)	Ref.Length				y'	Parts			
	d	A	B	C		Core	Rubber Grommet	Nut	Cap
V3-18-1	31	64	24.5	14.5	166	C1	V9.11.2	V9.13.1	VC3S or VC2
V3-18-2	31	81	24.5	14.5	146	C1	V9.11.2	V9.13.1	VC3S or VC2
V3-18-4	31	51	37.5	19.5	138	C1	V9.11.2	V9.13.1	VC3S or VC2
V3-18-5	31	68	37.5	19.5	138	C1	V9.11.2	V9.13.1	VC3S or VC2

**COMMERCIAL VEHICLE VALVES**



HF No.(TR No.)	Ref.Length			Core	Rubber Grommet	Nut	Cap
	d	A	y'				
V3-12-1	26	40		C1	V9.11.4	V9.13.1	VC3S or VC2
V3-12-2	26	95		C1	V9.11.4	V9.13.1	VC3S or VC2
V3-12-3	26	85		C1	V9.11.4	V9.13.1	VC3S or VC2

**TRIPLE BEND TUBELESS VALVES**



HF No.(TR No.)	Ref.Length			Core	Rubber Grommet	Nut	Cap
	d	A	y'				
V3-14-1	26	26	147	C1	V9.11.4	V9.13.1	VC3S or VC2
V3-14-2	26	45	147	C1	V9.11.4	V9.13.1	VC3S or VC2
V3-14-3	26	37	147	C1	V9.11.4	V9.13.1	VC3S or VC2

**DOUBLE BEND TUBELESS VALVES**



HF No.(TR No.)	Ref.Length			Core	Rubber Grommet	Nut	Cap
	D	A	W				
V3-13-1	46.5	42.5	153	C1	V9.11.4	V9.13.1	VC3S or VC2
V3-13-2	30	79	126	C1	V9.11.4	V9.13.1	VC3S or VC2

**SINGLE BEND TUBELESS VALVES**



HF No.(TR No.)	Ref.Length				Core	Rubber Grommet	Nut	Cap
	d	A	B	y'				
V3-15-2	31	11	16.5	95	C1	V9.11.2	V9.13.1	VC3S or VC2
V3-15-1	31	14	22.5	110	C1	V9.11.2	V9.13.1	VC3S or VC2

**DOUBLE BEND TUBELESS VALVES**



HF No.(TR No.)	Ref.Length			Core	Rubber Grommet	Nut	Cap	
	d	A	B					
V3-16-1	31	36	29	150	C1	V9.11.2	V9.13.1	VC3S or VC2

**COMMERCIAL VEHICLE VALVES**



HF No.(TR No.)	Ref.Length			Core	Rubber Grommet	Nut	Cap
	A	B	W				
V3-17-1	31.5	99	172	C1	V9.11.4	V9.13.1	VC3S or VC2
V3-17-2	31.5	116	172	C1	V9.11.4	V9.13.1	VC3S or VC2

**VALVE CORE**



9001-C



9002-C



**VALVE CORE TOOL**



**TIRE VALVES-L.B.&AIR-LIQUID TUBE VALVES**

**TR218A Series Rubber Covered Valves**



**TR600 SERIES**



**TRUCK & BUS TUBE VALVES**

**Rubber-Base Valves**



**MOTORCYCLE VALVES**

**Rubber base valves TR4 series**

Parts: C1 or VC8E, BW12, HN2.



**Rubber base valves TR87 series**

Parts: C1, VC8 or VC2.



**PASSENGER CAR & LIGHT TRUCK VALVES**

**Rubber covered valves**



## BICYCLE VALVES

### Rubber-Covered Valves

Parts: C1, VC8



TR1



TR1MS  
(Metal stem)

TR No.	China GB NO.(Ref.NO)	Base dia.(mm)	Length(mm)
Z1-09-1	TZ2-28	φ28 or φ25	29
Z1-09-3	TZ2-34	φ28 or φ25	34
TR-1	Z1-09-2/V1.07.1	φ28 or φ25	34

## TIRE VALVE EXTENSIONS FOR COMMERCIAL VEHICLES



TR/NO.	MATERIAL	REF.Length(mm)
EX95P	Plastic, Black/White	95
EX115P	Plastic, Black/White	115
EX125P	Plastic, Black/White	125
EX150P	Plastic, Black/White	150
EX170P	Plastic, Black/White	170
EX180P	Plastic, Black/White	180
EX200P	Plastic, Black/White	200

## CLIP



MHVM01  
Iron

MHVM02  
Iron

MHVM03  
Iron

MHVM04  
Aluminum Alloy

## TRUCK AND BUS EXTENSIONS



Part NO.	Ref.NO.(RC NO.)	Ref.Length(mm)	Length(mm)
EX30M	V2512	40	30
EX50M	V2514	60	50
EX60M	V2516	75	66
EX75M	V2518	86	76
EX90M	V2520	100	90
EX100M	V2522	110	100
EX110M		120	110
EX115M	V2524	125	115
EX120M		130	120
EX130M	V2526	140	130
EX140M	V2528	150	140
EX152M	V2530	162	152

## DUAL WHEEL FLEXIBLE VALVE EXTENSIONS



EX185R

EX185S

Part NO.	Ref.NO.(RC NO.)	Ref.Length(mm)	Length(mm)
EX125R/S	2130-125	2130-125	125
EX150R/S	2130-150	2130-150	150
EX175R/S	2130-175	2130-175	175
EX185R/S	2130-185	2130-185	185
EX200R/S	2130-200	2130-200	200
EX210R/S	2130-210	2130-210	210
EX250R/S	2130-250	2130-250	250
EX350R/S	2130-350	2130-350	350
EX400R/S	2130-400	2130-400	400
EX450R/S	2130-450	2130-450	450
EX500R/S	2130-500	2130-500	500

**VALVE CAP**





**HEAVY-DUTY DUAL-HEAD  
TIRE CHUCK**



MH-AC01 MH-AC02 MH-AC03 MH-AC04  
1/4", 5/16" hose bar

**PENCIL TYPE TIRE GAUGE**



PTG-002

Part No.	Description
PTG-002	Different color: Green, blank, blue, chrome, red, yellow, white plastic head, metal body
	Calibrated:
	5-50PSI
	scales selection(bar ,lpa,kg/cm, psi)



Part No.	Description
PTG-001A/B	Metal head, metal body, plastic bar 5-50 Lbs/Psi, 10-100 Lbs/Psi Scales selection(bar ,lpa,kg/cm, psi)
PTG-001C/D	Two type Head, plastic and metal body. 10-120PSI Scales selection(bar ,lpa,kg/cm, psi)



Part No.	Description
PTG-007A	Metal head, metal body, 4 side plastic bar calibrated: 10-120lbs Scales selection(bar ,lpa,kg/cm, psi)
PTG-007B	Metal head, metal body, 4 side plastic bar calibrated: 20-120lbs Scales selection(bar ,lpa,kg/cm, psi)
PTG-008B	Metal head, metal body, 2 side plastic bar calibrated: 10-160PSI Scales selection(bar ,lpa,kg/cm, psi)

**TIRE REPAIR KIT**

**15 PCS Tire Repair Kit**



Part No.	Description
D407	4pcs Plastic caps
	4pcs Chrome hex caps
	4pcs Valve cores
	1pc Pencil gauge
	1pc 4-way tool
	1pc Plastic box

**TIRE INFLATING AIR CHUCKS**



MH-TC01 Size:1/4" MH-TC02 Size:8mm MH-TC03 Size:6mm MH-TC04 Size:1/4"



MH-TC05 Size:1/4" MH-TC06 Size:8mm MH-TC06L Size:8mm MH-TC07 Size:1/4"



MH-TC08 Size:1/4" MH-TC09 Size:78\*20mm MH-TC10 Size:78\*20mm



**TIRE GUN**



MH-TB-06

Content: Y80 Header/all copper vent valve/rubber tube  
Calibrated: 0-12bar, 0-170psi



MH-A97

Pressure gauge watchcase size: 51mm  
Air in let: 1/4" Male  
Calibrated: 0-220 PSI or 0-16 BAR  
Scales selection(bar, Kpa, Kg/cm², PSI)  
Black flexible hose



MH-A85

Pressure gauge watchcase size: 50mm  
Air in let: 1/4" Male  
Calibrated: 0-1500 KPA, 0-15 BAR, 0-220PSI  
Scales selection(bar, Kpa, Kg/cm², PSI)  
This product has 4 kinds of color can choose (RED, GOLDEN, BLUE, WHITE)



MH-TB-04

Oil gauge  
Content: Shockproof meter /rubber tube  
Calibrated: 0-12bar(0-170psi)



MH-A87

Standard type: Plastic body w/protective rubber casing, flexible hose, clip-on chuck  
Pressure gauge watchcase size: 63 mm  
Calibrated: 0-170 PSI or 0-12 BAR  
Scales selection(bar, Kpa, Kg/cm², PSI)



MH-TB-03

Content: Mechanical meter /rubber tube  
Calibrated: 0-12bar(0-170psi)



**TIRE GAUGE**



MH-TB-17

MH-TB-17

Content: Y40 Header, brass stem, drawn steel case with friction ring and acrylic lens, needle holds reading until released, metal body

Calibrated: 0-16bar (0-220psi)

MH-TB-16

Content: Zinc alloy body colour matte, with chrome plated friction ring, acrylic lens

Calibrated: 0-7.5bar, 0-100psi



MH-TB-16



MHHB-110

MHHB-110

Digital tire gauge, (pressure range): 3-100 PSI;

(high accuracy): +1.5 PSI;

(Size): 136x56x31mm



MH-TB-14

MH-TB-14

Content: straight-on chuck, metal body w/protective rubber casing, bleed valve

Calibrated: 0-15bar, 0-220psi

MH-TB-12

Standard type: Metal protective shell / Double heard air nozzle / easy to read

Calibrated: 0-16bar, 0-220psi



MH-TB-12



MH-TB-01

MH-TB-01

Content: Digital pressure gauge/rubber tube/All copper vent switch

Calibrated: 0-14bar, 0-200psi



MH-TB-02

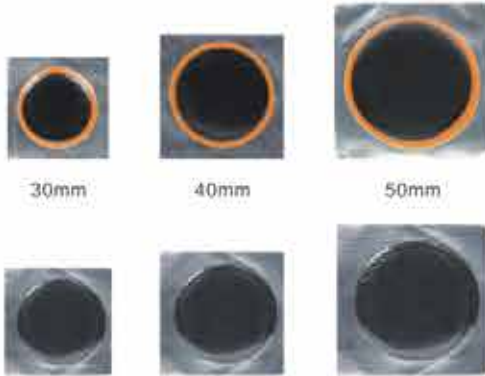
MH-TB-02

Content: Digital pressure gauge/rubber tube

Calibrated: 0-16bar, 0-220psi

**INNER TIRE PATCH**

Cold mending inner tube tire patch



ITEM	SIZE(MM)	BOX QTY(PCS)	CTN QTY (BOX)
SP01	25	64	200
SP02	30	36	200
SP03	40	20	200
SP04	50	16	200
SP05	70	9	200



Item	Size	BOX QTY(PCS)	CTN QTY (BOX)
MH-SP06	20*30mm	48	200
MH-SP07	30*50mm	24	200
MH-SP08	60*40mm	12	200
MH-SP09	45*75mm	12	200

**ALL-PURPOSE REPAIR PATCH**



ITEM	SIZE(MM)	BOX QTY(PCS)	CTN QTY (BOX)
MH-SP25	46*46	40	100
MH-SP26	56*56	30	100

**AMERICAN STYLE RADIAL PATCH**



Item	Size	Packing
MH-AR08	45*76mm	20PCS/box
MH-AR10	57*76mm	20PCS/box
MH-AR10HD	65*80mm	20PCS/box
MH-AR12	57*102mm	10PCS/box
MH-AR12HD	75*115mm	10PCS/box
MH-AR14	95*102mm	10PCS/box
MH-AR20	76*125mm	10PCS/box

**AMERICAN STYLE BIAS PATCH**



Item	Description	Size	Packing
MH-AB01	Cord, 1ply	57mm	15PCS/box, 96box/ctn
MH-AB02	Cord, 1ply	81mm	10PCS/box, 105box/ctn
MH-AB03	Cord, 2ply	90*90mm	20PCS/box, 40box/ctn
MH-AB04	Cord, 2ply	115*115mm	10PCS/box, 38box/ctn
MH-AB05	Cord, 2ply	140*140mm	10PCS/box, 30box/ctn
MH-AB06	Cord, 3ply	165*165mm	10PCS/box, 18box/ctn

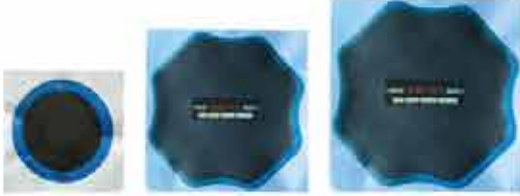
**AMERICAN STYLE BIAS PATCH**



Item	Size	Packing
MH-ER08	48*68mm	20PCS/box
MH-ER10	56*77mm	20PCS/box
MH-ER12	70*120mm	10PCS/box
MH-ER18	75*100mm	10PCS/box
MH-ER20	85*135mm	10PCS/box



**EURO STYLE BIAS TIRE REPAIR UNITS**

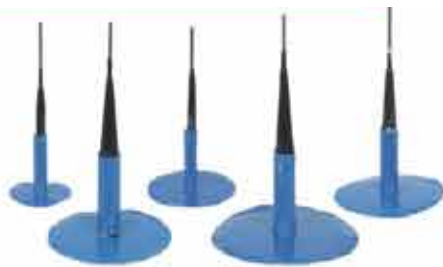


Item	Size	Packing
MH-EB01	96mmRound	10PCS/box
MH-EB02	120*120mm	10PCS/box
MH-EB03	147*147mm	10PCS/box
MH-EB04	192*192mm	10PCS/box

**TIRE REPAIR SEAL STRING INSERTS**

ITEM	DIA	DESCRIPTON	COLOR
MH-S46	φ3.5	8inch(200mm)	Black
MH-S47	φ3.5	4inch(100mm)	Black
MH-S48	φ3.5	8inch(200mm)	Brown
MH-S49	φ3.5	4inch(100mm)	Brown
MH-S50	φ4.5	8inch(200mm)	Black
MH-S51	φ4.5	4inch(100mm)	Black
MH-S52	φ4.5	8inch(200mm)	Brown
MH-S53	φ4.5	4inch(100mm)	Brown
MH-S54	φ6.0	8inch(200mm)	Black
MH-S55	φ6.0	4inch(100mm)	Black
MH-S56	φ6.0	8inch(200mm)	Brown
MH-S57	φ6.0	4inch(100mm)	Brown

**TIRE REPAIR MUSHROOM PLUG**



Item	Lenght(mm)	Dia	Box Qty	Case Qty
MH-SP41	36	4mm	24	36
MH-SP42	36	6mm	24	36
MH-SP43	46	6mm	24	36
MH-SP44	50	9mm	24	27
MH-SP45	60	6mm	24	27
MH-SP46	60	9mm	24	27

**INSERTS**



TR/NO.	SIZE(mm)	Box Qty
SST-131	4	50
SST-132	6	40
SST-133	9	25





**TIRE REPAIR TOOL**



D42A



D42B



D42C



D42D



D42E



D42H



D42J



D423

D424

VCT-08



D428

D429



D430

D421



D432

D433



D426

Heavy-duty T-handle spiral probe cement tool



D427

Insertion tools



MHSSP11



MHSSP13



MHSSP12



MHSSP06



MHSSP08



MHSSP07

**TIRE REPAIR TOOL SETS**



MHSSP11SET



MHSSP12SET



MHSSP13SET



MHSSP01SET



MHSSP02SET



MHSSP05SET



MHSSP06SET



MHSSP07SET



MHSSD402  
**27 PCS Tire Repair Kit**



MHSSP03SET



MHSSP04SET

Part No.	Description
D402	1pc Zinc-alloy T-handle Insert Tools
	1pc Zinc-alloy T-handle Spiral probe tools
	1pc Plastic Box
	2pcs Replacement tool
	30pcs 6*100mm string
	1pc Lube
	1pc Knife

**TIRE AND TUBE MOUNTING COMPOUND**



TR/NO.	COLOR	WEIGHT	DESCRIPTION
MHST-101	White	1kg	Euro-paste
MHST-303	White	2kg	Euro-paste
MHST-305	White	3kg	Euro-paste

**BRUSH**



MH-BS02  
26MM

**TIRE REPAIR RUBBER NAIL**



MH-NA01

MH-NA02

MH-NA03



MH-NA04



**WHEEL WEIGHT PLIERS**



D513  
Passenger & Truck  
Wheel Weight Tools

D513G

D505

D506

**BALL BEARING STITCHER & ROLLERS**



MH-GSP

Serrated Edge

TR/NO.	DESCRIPTION	SIZE
MH-GS4	Ball Bearing Stitcher & Rollers	4mm
MH-GS5	Ball Bearing Stitcher & Rollers	5mm
MH-GS6	Ball Bearing Stitcher & Rollers	6mm
MH-GS8	Ball Bearing Stitcher & Rollers	7.8mm

**TIRE REPAIR SCRAPER  
TIRE MOUNTING PROTECTOR**

For cleaning the innerliners for both puncture and section repairs prior to buffer. Removes mounting lubricants, silicones etc from the surface of the innerliner.



STR-21/3



D512



**PLIER**



D501  
Mini plier for drawing  
nail form tire sharp  
cutting

**AIR DIE GRINDER**



MH7033

1pc Air Die Grinder

2pc Hand Wrenches

1pc 3mm Collet

1pc Nipple

5PC 3mm Mounted Grinding Stones

5PC 6mm Mounted Grinding Stones

**CROSS RIM WRENCH**

Carbon-steel heat treatment

L-Type Socket Wrench

High quality steel drop forged, whole  
heat treatment, polished chrome plated



D508



D509

D511

D510



MH7033-1



MH-5525  
55\*25mm



MH-4020  
40\*20mm



**GRINDER HEAD**



MH-1007  
Ø50\*12mm



MH-1008  
Ø50\*8mm



MH-1009  
Ø50\*6mm



MH-1010  
Ø33\*7\*3mm

**LABOR SAVING WRENCH**



MH-58D-A  
Trans-speed ratio: 1:54  
Max torque output: >5000N.M  
Drive square: 1"  
Weight: 13kg  
Material: 40Cr  
Sockets: 1-8pcs



MH-58D-B  
Trans-speed ratio: 1:58  
Max torque output: >4800N.M  
Drive square: 1"  
Weight: 7.5kg  
Material: 40Cr  
Sockets: 1-4pcs



MH-68C-C  
Trans-speed ratio: 1:68  
Max torque output: >6200N.M  
Drive square: 1"  
Weight: 8.5kg  
Material: 40Cr  
Sockets: 1-4pcs



MH-88D-A  
Trans-speed ratio: 1:64/1:4, 2/1:1  
Max torque output: >6800N.M  
Drive square: 1"  
Weight: 9.5kg  
Material: 40Cr  
Sockets: 1-4pcs

**FE CLIP-ON BALANCE WEIGHT**



MHFC01

FE CLIP-ON WEIGHTS FOR STEEL RIM(FOR BUS)  
SIZE: 50g, 100g, 150g, 200g, 250g, 300g



MHFC03

FE CLIP-ON WEIGHTS FOR ALUMIUM RIM  
SIZE: 5g, 10g, 15g, 20g, 25g, 30g, 35g, 40g, 45g, 50g, 55g, 60g.



MHFC04

FE CLIP-ON WEIGHT FOR ALUMIUM RIMS  
SIZE: 5g, 10g, 15g, 20g, 25g, 30g, 35g, 40g, 45g, 50g, 55g, 60g.



**FE ADHESIVE BALANCE WEIGHT**



**ZINC CLIP-ON BALANCE WEIGHT**



**LEAD/PH CLIP-ON BALANCE WEIGHT**



**LEAD/PH ADHESIVE BALANCE WEIGHT**



**1" AIR IMPACT WRENCH**



Item No.	MH105Y/H/B
Square drive	1", 1.25"
Air inlet	1/2"
No-load speed	3200r.p.m
Air Pressure	8-12kg/cm <sup>2</sup>
Weight	20kg
Max Torque	6800N.m
Anvil Length	in8"
Clutch mechanism	Pin-less Hammer



Item No.	MH580H
Square drive	1"
Air inlet	1/2"
No-load speed	4200r.p.m
Air Pressure	8-12kg/cm <sup>2</sup>
Weight	14kg
Max Torque	2600N.m
Anvil Length	in8"
Clutch mechanism	Pin-less Hammer



Item No.	MH70-2
Square drive	1"
Air inlet	1/2"
No-load speed	4000r.p.m
Air Pressure	8-12kg/cm <sup>2</sup>
Weight	16.5kg
Max Torque	3800N.m
Anvil Length	in8"
Clutch mechanism	Pin-less Hammer

**3/4" AIR IMPACT WRENCH**



Item No.	MH380
Square drive	3/4"
Air inlet	3/8"
No-load speed	3200r.p.m
Air Pressure	8-12kg/cm <sup>2</sup>
Weight	5.5kg
Max Torque	1800N.m
Anvil Length	in1.5"
Clutch mechanism	Twin Hammer



Item No.	MH680
Square drive	1", 3/4"
Air inlet	1/2"
No-load speed	3800r.p.m
Air Pressure	8-12kg/cm <sup>2</sup>
Weight	6.8kg
Max Torque	2400N.m
Anvil Length	in1.5", 6"
Clutch mechanism	Twin Hammer



Item No.	MH430
Square drive	3/4"
Air inlet	3/8"
No-load speed	3200r.p.m
Air Pressure	8-12kg/cm <sup>2</sup>
Weight	6.8kg
Max Torque	2200N.m
Anvil Length	in1.5", 6"
Clutch mechanism	Twin Hammer



**1/2" AIR IMPACT WRENCH**



Item No.	MH396
Square drive	1/2"
Air inlet	1/4"
No-load speed	7000r.p.m
Air Pressure	8-10kg/cm <sup>2</sup>
Weight	2.8kg
Max Torque	950N.m
Anvil Length	in1"
Clutch mechanism	Twin Hammer



Item No.	MH300
Square drive	1/2"
Air inlet	1/4"
No-load speed	8000r.p.m
Air Pressure	8-12kg/cm <sup>2</sup>
Weight	3.2kg
Max Torque	850N.m
Anvil Length	in1"
Clutch mechanism	Twin Hammer



Item No.	MH280
Square drive	1/2"
Air inlet	1/4"
No-load speed	7500r.p.m
Air Pressure	8-12kg/cm <sup>2</sup>
Weight	2.6kg
Max Torque	640N.m
Anvil Length	in1"
Clutch mechanism	Twin Hammer



Item No.	MH661
Square drive	3/4"
Air inlet	1/4"
No-load speed	5000r.p.m
Air Pressure	8-10kg/cm <sup>2</sup>
Weight	4.65kg
Max Torque	1360N.m
Anvil Length	in1"
Clutch mechanism	Twin Hammer



Item No.	MH3000
Square drive	1/2"
Air inlet	1/4"
No-load speed	7000r.p.m
Air Pressure	8-10kg/cm <sup>2</sup>
Weight	3.15kg
Max Torque	850N.m
Anvil Length	in1"
Clutch mechanism	Twin Hammer

**AIR IMPACT WRENCH HOLDER**



MH-AH01

**INFLATOR**



MHTI01

DC12V, 150PSI  
 Cylinder dia: 30mm  
 inflate ordinary car tyre  
 3 cord with cigarette lighter plug and 1m air hose  
 packing: color box



MHTI04

maximum power : 150PSI  
 MAX current : 25A  
 air cylinder : 30mm  
 Rubber air hose 0.25mm  
 Pipe : 5mPE  
 Nozzle adapter : 3pcs  
 Wire length : 3m  
 air current : 60L/Min



MHTI03

DC12V, 150PSI  
 Cylinder dia: 30mm  
 inflate ordinary car tyre  
 3 cord with cigarette lighter plug and 1m air hose  
 digital gauge packing: color box



MHTI05

DC12V-13.5V,150PSI,27L/min  
 No-load current:8A  
 Working current:12A  
 Cylinder dia: 30mm  
 Inflate ordinary car tyre  
 3m cord with cigarette lighter plug and 1m high pressure hose, with light



MHTI04S

Working Voltage:12V  
 Bulb Type: With LED  
 Cylinder Diameter:30 mm,Double cylinder  
 Whole:1\*User Manual 1\*Air Pump 1\*Toolkit



MHTI06

DC12V-13.5V,250PSI,9L/min  
 No-load current:4A  
 Working current:6A  
 Cylinder dia: 16mm  
 Inflate ordinary car tyre  
 3m cord with cigarette lighter plug and 0.45m hose

**FLOOR JACK**



MHFJ-01  
CAPACITY(TON):2T  
MIN.HEIGHT(MM):125  
MAX.HEIGHT(MM):300  
NET.WEIGHT(KG):6.3  
PACKAGE:COLOR BOX 45\*21\*14CM



MHFJ-02  
CAPACITY(TON):2T  
MIN.HEIGHT(MM):125  
MAX.HEIGHT(MM):330  
NET.WEIGHT(KG):8.5  
PACKAGE:COLOR BOX 48\*23\*15CM



MHFJ-03  
CAPACITY(TON):3T  
MIN.HEIGHT(MM):135  
MAX.HEIGHT(MM):495  
NET.WEIGHT(KG):28  
PACKAGE:COLOR BOX 68\*38.5\*19CM



MHFJ-04  
CAPACITY(TON):3T  
MIN.HEIGHT(MM):135  
MAX.HEIGHT(MM):495  
NET.WEIGHT(KG):32  
PACKAGE:COLOR BOX 68\*38.5\*19CM

**SCISSOR JACK**



MHSJ01  
1T  
Rising range:90-328mm



MHSJ02  
2T  
Rising range:95-440mm

**BOTTLE JACK**



MHFJ-05



MHFJ-06



MHFJ-07



MHFJ-08



MHFJ-09



MHFJ-10



MHFJ-11



MHFJ-12

**AIR BALLOON JACK**



MH-AJ01  
Loading weight:3 tone  
Min Height:140mm  
MAX.Height:400mm  
Packing Size:430\*370\*170mm  
N.W:15kg  
G.W:18KG



MH-AJ02  
Loading weight:3 tone  
Min Height:140mm  
MAX.Height:400mm  
Packing Size:430\*370\*170mm  
N.W:15kg  
G.W:18KG



MH-JS01  
Car Jack Stand

Loading Weight:3 tons  
Min Height:285mm  
MAX.Height:420mm  
Packing Size:660\*420\*350mm  
N.W:4.6kg  
G.W:4.9KG



MHFJ-13



MHFJ-14



MHFJ-15



MHFJ-16

TR/NO.	Capacity	Adjusth	Packge size	N.W/G.W	Lifting range
MHFJ-05	2T	60mm	500*240*180mm(2)pcs	2.1/2.2kg	148-278mm
MHFJ-06	3T	60mm	500*250*180mm(5)pcs	11.5/12.5kg	159-308mm
MHFJ-08	5T	60mm	570*335*200mm(5)pcs	15/16kg	180-330mm
MHFJ-10	8T	60mm	620*335*220mm(5)pcs	19/20kg	185-355mm
MHFJ-11	10T	60mm	620*350*225mm(4)pcs	19.2/20kg	200-375mm
MHFJ-12	12T	60mm	540*345*220mm(4)pcs	20.8/21.5kg	200-375mm
MHFJ-13	16T	60mm	580*355*230mm(4)pcs	26/27kg	210-395mm
MHFJ-14	20T	60mm	320*365*250mm(2)pcs	18/18kg	225-415mm
MHFJ-15	32T	60mm	340*385*260mm(2)pcs	19.2/20kg	235-440mm



**TIRE VULCANIZING MACHINE**



MHCX-D  
Multifunctional curing press  
220V 2\*450W Package:2pcs/ctn



MHSK200  
Timing Tire mending machine  
220V 500w Package:3pcs/ctn



MHTSH12  
Trolley point vulcanizer  
220V 2\*500w Package:2pcs/ctn



MHSH-120  
Bending Bow Type Vulcanizing Machine  
220V 2\*500W Package:3pcs/ctn



MHTSH18  
Cart point vulcanizer  
220V 2\*500w Package:1pc/ctn



MHSH-10  
Truck Point Vulcanizing Machine  
220V 2\*500W Package:1pc/ctn

**TIRE VULCANIZING MACHINE**



MHAD-II  
Vacuum tube curing press  
220V 2\*450W Package:1pc/ctn



MHSZ  
Rotary Vulcanizer  
220V 2\*450W Package:1pc/ctn

**BEAD SEATER TANK**



MHST-039A-5



MHST-039A-10

TR/NO.	CAPACITY	N.W.	G.W.
MHST-039A-5	5Gallon/19L	11kgs	12kgs
MHST-039A-10	10Gallon/37L	15kgs	16kgs



MHST-039



MHST-039B



MHST-039C

TR/NO.	CAPACITY	N.W.	G.W.
MHST-039	6Gallon/23L	12.5kgs	13.7kgs
MHST-039B	10Gallon/37L	16kgs	17kgs
MHST-039C	3Gallon/12L	8.2kgs	9.2kgs

**SHOP CRANE**



Item No.	Capacity	Lifting Range(mm)	N.W.G.W(kg)	Size(cm)
MH1601	1Ton Foldable	0-2200mm	55/58kg	133x25x17cm 73x54x6cm
MH1602	2Ton Foldable	0-2200mm	81/84kg	137x25x17cm 73x54x6cm
MH1603	2Ton Foldable	0-2200mm	83/86kg	144x25x17cm 86x61x6cm
MH1604	2Ton Foldable	30-2200mm	52/54kg	124x25x17cm 122x79x8cm
MH1605	2Ton Foldable	30-2200mm	59/61kg	126x25x16cm 126x81x8cm
MH1606	3Ton Foldable	30-2200mm	76/79kg	126x25x16cm 126x81x8cm
MH1607	3Ton Foldable	30-2200mm	87/90kg	141x30x19cm 132x83x11cm
MH1608	3Ton Foldable	30-2200mm	129/132kg	141x30x19cm 150x93x11cm

**TYRE TOOLS**



MHTY-A  
Pry plate



MHTY-B  
High-grade pry plate



MHTY-C  
Special skid plate type scraping machine



MHTY-1  
1m/2.1kg



MHTY001  
1.2m/10.5kg



MHTY002  
1.2m/12.5kg



MHTY003  
1.15m/9kg



MHTY004  
1.2m/12kg



MHTY005  
1.4m/8kg



MHTY008  
12.5KG/set



MHTY007  
14kg/set

**OTHERS**



MHTSP36  
Air Operated Spreader  
Biggest Enlarg:350mm



MH-GB  
Foot Pedal Oil Injector Grease Bucket



MHTYJ01  
Tire Bead Breaker



MH-LB  
Car Lying Board



MH-WM01  
Car Tire Wheel Moving Dollies



MH-WM02  
Car Tire Wheel Moving Dollies



**TOOL BOX**



MH4040  
Product Size: 46.5\*20.9\*20.4cm  
NW/GW: 4.5/5 kg  
Packing Size: 47.5\*21.5\*21cm

**OIL FILTER**



Swivel Oil Filter Wrench  
Material: Stainless Steel

Item No.	Size Inch/mm	Q' Ty per	Packing	G.W/N.W kg	Meas cm
MH2902	2-3/8"-2-3/8" 63-66.7	6/36	Sliding Card	11.1/12.5	51x30.5x39
MH2903	2-3/4"-2-3/4" 70-82.8	6/36	Sliding Card	11.8/13.3	51x30.5x39
MH2904	3-7/16"-3-3/4" 87-95	6/36	Sliding Card	12.5/13.8	51x30.5x39

**TOOL TROLLEY**



MH4050  
Spec.: 3 layers  
Steel Thickness: 0.6mm  
NW/GW: 8.5/9 kg  
Size: 68\*36.5\*18cm



Swivel Oil Filter Wrench  
Material: Carbon Steel

Item No.	Size Inch/mm	Q' Ty per	Packing	G.W/N.W kg	Meas cm
MH2805	2-3/8"-2-7/8" 60-73	6/36	Sliding Card	11.8/10.3	50x30x40
MH2806	2-7/8"-3-3/8" 73-85	6/36	Sliding Card	12.3/10.8	50x30x40
MH2807	3-3/8"-3-3/4" 85-95	6/36	Sliding Card	13.4/11.9	50x30x40
MH2808	3-3/4"-4-3/8" 95-110	6/36	Sliding Card	13.9/12.4	50x30x40

**TOOL TROLLEY**



MHDG-10



MHDG-10-1



MHDG-12

MHDG-12  
Air blow gun, 1.2meter tube, 15psi  
aluminum alloy Cavity

**TIRE TREAD DEPTH GAUGE**



MH-TG01  
Material: Stainless Steel  
Measuring Range: 0-25mm/0-32nds  
Description: both sides measurement

**NUT**



HEX 19

Part #	Thread Size
1902SR	7/16
1903SR	3/8
1904SR	1/2
1905SR	10mmx1.25
1906SR	12mmx1.25
1907SR	12mmx1.50
1909SR	14mmx1.50
1910SR	14mmx2.00



HEX 21

Part #	Thread Size
5302	7/16
5303	3/8
5304	1/2
5305	10mmx1.25
5306	12mmx1.25
5307	12mmx1.50
5309	14mmx1.50
5310	14mmx2.00



Part #	Thread Size
1301	7/16
1302	3/8
1303	1/2
1304	10mmx1.25
1305	12mmx1.25
1306	12mmx1.50
1307	14mmx1.50
1309	14mmx2.00



HEX 21

Part #	Thread Size
1902-PW	7/16
1903-PW	3/8
1904-PW	1/2
1905-PW	10mmx1.25
1906-PW	12mmx1.25
1907-PW	12mmx1.50
1909-PW	14mmx1.50
1910-PW	14mmx2.00



HEX 21

Part #	Thread Size
5502Z	7/16
5503Z	3/8
5504Z	1/2
5505Z	10mmx1.25
5506Z	12mmx1.25
5507Z	12mmx1.50
5509Z	14mmx1.50
5510Z	14mmx2.00



Part #	Thread Size
1302S	7/16
1303S	3/8
1304S	1/2
1305S	10mmx1.25
1306S	12mmx1.25
1307S	12mmx1.50
1309S	14mmx1.50
1310S	14mmx2.00



MH-NT01  
16+1



MH-NT02  
20+1



MH-NT03  
4+1



MH-NT04  
16+1



MH-NT05  
20+1



MH-NT06



**6 POINT TUNER**

Part #	Thread Size	Part #	Thread Size	Part #	Thread Size	Part #	Thread Size	Part #	2800
2802	7/16	2802BK	7/16	2802R	7/16	2802B	7/16	Hex Size	19/21mm
2803	3/8	2803BK	3/8	2803R	3/8	2803B	3/8	Length	62mm
2804	1/2	2804BK	1/2	2804R	1/2	2804B	1/2		
2805	10mmx1.25	2805BK	10mmx1.25	2805R	10mmx1.25	2805B	10mmx1.25		
2806	12mmx1.25	2806BK	12mmx1.25	2806R	12mmx1.25	2806B	12mmx1.25		
2807	12mmx1.50	2807BK	12mmx1.50	2807R	12mmx1.50	2807B	12mmx1.50		
2809	14mmx1.50	2809BK	14mmx1.50	2809R	14mmx1.50	2809B	14mmx1.50		
2810	14mmx2.00	2810BK	14mmx2.00	2810R	14mmx2.00	2810B	14mmx2.00		

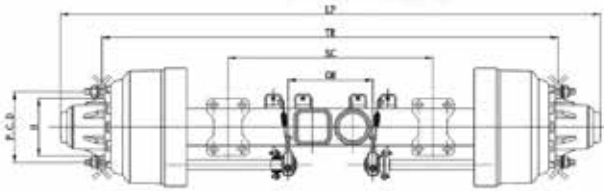
**6 POINT TUNER**

Part #	Thread Size	Part #	Thread Size	Part #	Thread Size	Part #	Thread Size	Part #	Hex Size
3802	7/16	3802BK	7/16	3802R	7/16	3802B	7/16	3800	19/21mm
3803	3/8	3803BK	3/8	3803R	3/8	3803B	3/8		
3804	1/2	3804BK	1/2	3804R	1/2	3804B	1/2		
3805	10mmx1.25	3805BK	10mmx1.25	3805R	10mmx1.25	3805B	10mmx1.25		
3806	12mmx1.25	3806BK	12mmx1.25	3806R	12mmx1.25	3806B	12mmx1.25		
3807	12mmx1.50	3807BK	12mmx1.50	3807R	12mmx1.50	3807B	12mmx1.50		
3809	14mmx1.50	3809BK	14mmx1.50	3809R	14mmx1.50	3809B	14mmx1.50		
3810	14mmx2.00	3810BK	14mmx2.00	3810R	14mmx2.00	3810B	14mmx2.00		

Hexagon Lug	Part #	Hex	Thread Length	Overall Length	Thread Size	Seat
	172406	17	24	24	12x1.25	60°
	172407	17	24	24	12x1.50	60°
	172409	17	24	24	14x1.50	60°
	172806	17	28	28	12x1.25	60°
	172807	17	28	28	12x1.50	60°
	172809	17	28	28	14x1.50	60°
	173306	17	33	33	12x1.25	60°
	173307	17	33	33	12x1.50	60°
	173309	17	33	33	14x1.50	60°
	173906	17	39	39	12x1.25	60°
	173907	17	39	39	12x1.50	60°
	173909	17	39	39	14x1.50	60°



**AMERICAN TYPE AXLE**



型号 Model	额定载荷 Capacity (kg)	轴间距 Wheel Track (mm)	轴距 TS (mm)	弹簧中心距 Spring Center (mm)	轴管长度 Axle Tube (mm)	轴管中心距 Center Distance of Brake Chamber (mm)	制动鼓间距 Wheel Firing Studs (mm)	轴管长度 P.C.D. (mm)	总长度 Total Length LP (mm)	轴间距 Recommended Wheel	备注 Remarks	
LHQ103T	10500	5420x180	1620	φ930	1127	368	10MA2*1.5	335	2811	-2165	7.5V-20	标配ABS
LHQ113T	13000	5420x180	1660	φ930	1127	390	10MA2*1.5	335	2811	-2185	7.5V-20	标配ABS
LHQ117	13000	5420x180	1660	φ930	1150	390	10MA2*1.5	335	2811	-2185	7.5V-20	标配ABS
LHQ141	14000	5420x220	1640	φ930	1150	342	10MA2*1.5	335	2811	-2185	7.5V-20	标配ABS
LHQ147	14000	5420x220	1650	φ940	1158	357	10MA2*1.5	335	2811	-2205	8.0V-20	标配ABS
LHQ201	20000	5420x220	1850	φ940	1150	354	10MA2*1.5	335	2811	-2252	8.5V-20	标配ABS

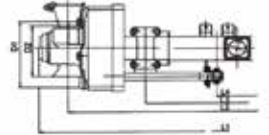
备注：1. 轴管长度 (TS) 可根据客户要求定制  
2. 轴管可安装ABS制动

**LOW-BED SERIES**



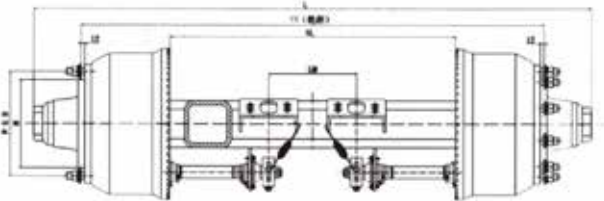
型号 Model	额定载荷 Capacity (t)	轴间距 Wheel Track (mm)	轴距 TS (mm)	弹簧中心距 Spring Center (mm)	轴管长度 Axle Tube (mm)	轴管中心距 Center Distance of Brake Chamber (mm)	制动鼓间距 Wheel Firing Studs (mm)	轴管长度 P.C.D. (mm)	总长度 Total Length LP (mm)	轴间距 Recommended Wheel	备注 Remarks	
LH111	11	2040	212480	+1300	-121	330	10MA2L1.5	225	176	2640	6.5	+225
LH113	13	1850	211480	+1300	-121	400	10MA2L1.5	225	176	2640	6.5	+225
LH115	15	1850	211480	+1300	-121	420	10MA2L1.5	225	176	2640	6.5	+225

**SPOKE AXLE**



型号 Model	额定载荷 Capacity (t)	轴间距 Wheel Track (mm)	轴距 TS (mm)	弹簧中心距 Spring Center (mm)	轴管长度 Axle Tube (mm)	轴管中心距 Center Distance of Brake Chamber (mm)	制动鼓间距 Wheel Firing Studs (mm)	轴管长度 P.C.D. (mm)	总长度 Total Length LP (mm)	轴间距 Recommended Wheel	备注 Remarks		
LH4219	12	5400x180	1730	φ1020x2	147	24	1840	421	950	22118	22111	+1218	+405
LH4219	12	5400x220	1730	φ1020x2	147	24	1840	421	950	22118	22111	+1218	+405
LH4219	14	5400x220	1730	φ1020x2	147	24	1840	449	950	22214	22211	+1218	+440
LH4219	16	5400x220	1730	φ1020x2	147	24	1840	449	950	22222	22214	+1245	+518
LH4219	18	5400x220	1730	φ1020x2	147	24	1840	449	950	22222	22214	+1245	+518
LH4219	18	5400x220	1730	φ1020x2	147	24	1840	449	950	22222	22214	+1245	+545

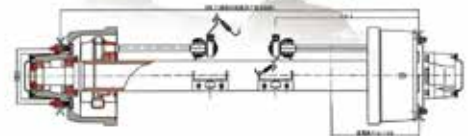
**GERMAN TYPE AXLE**



型号 Model	额定载荷 Capacity (kg)	轴间距 Wheel Track (mm)	轴距 TS (mm)	弹簧中心距 Spring Center (mm)	轴管长度 Axle Tube (mm)	轴管中心距 Center Distance of Brake Chamber (mm)	制动鼓间距 Wheel Firing Studs (mm)	轴管长度 P.C.D. (mm)	总长度 Total Length LP (mm)	轴间距 Recommended Wheel	备注 Remarks
LHG-137	12,000	2144	1640	402	150x150x12	4420x180	10MA2x1.5 150	433	4281	1730V-20	1718 1718
LHG-147	14,000	2198	1640	355	150x150x16	4420x180	10MA2x1.5 150	433	4281	8.00V-20	1718 1718
LHG-147	16,000	2272	1650	254	150x150x16	4420x180	10MA2x1.5 150	435	4281	8.00V-20	1718 1718

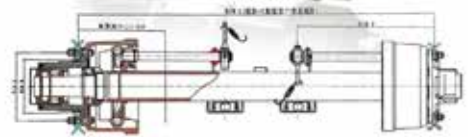
备注：1. 轴管长度可根据客户要求定制  
2. 轴管可安装ABS制动

**JAP TYPE AXLE**



型号 Model	额定载荷 Capacity (kg)	轴间距 Wheel Track (mm)	轴距 TS (mm)	弹簧中心距 Spring Center (mm)	轴管长度 Axle Tube (mm)	轴管中心距 Center Distance of Brake Chamber (mm)	制动鼓间距 Wheel Firing Studs (mm)	轴管长度 P.C.D. (mm)	总长度 Total Length LP (mm)	轴间距 Recommended Wheel	备注 Remarks	
LJ1320	40T*20T	JAP	87MA2P*200	221	730	3221/178	20"	130	1850mm	1.3T	4*40	372G

**THAI TYPE AXLE**



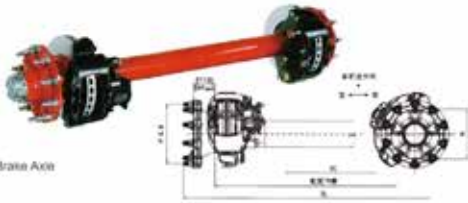
型号 Model	额定载荷 Capacity (kg)	轴间距 Wheel Track (mm)	轴距 TS (mm)	弹簧中心距 Spring Center (mm)	轴管长度 Axle Tube (mm)	轴管中心距 Center Distance of Brake Chamber (mm)	制动鼓间距 Wheel Firing Studs (mm)	轴管长度 P.C.D. (mm)	总长度 Total Length LP (mm)	轴间距 Recommended Wheel	备注 Remarks	
LH1181	420*180	JAP	87MA2P*200	221	722.5	3221/178	20"	130	1850mm	1.3T	4*40	372kg
LH1181	420*180	STD	87MA2P*200	281	722.5	3221/178	20"	130	1850mm	1.3T	4*40	372kg
LH2020	420*220	STD	87MA2P*200	281	722.5	3221/178	20"	130	1850mm	2.0T	4*40	372kg

**DISC BRAKE SHAFT**



American Type Disc Brake Axle  
美式碟刹车桥

车型名称 Axle type	最大轴荷 100kN kg/ton	碟刹轴径 Disc brake mm	制动轴径 WABCO mm	轴间距 1219 mm	轴距 Type 30 mm	制动鼓规格 Wheel Firing			总长度 Total length (mm)	轴荷间距 Mounting width			
Model no.	Axis beam size (mm)	轴径 Type	制动轴径 WABCO (mm)	轴间距 mm	轴距 Type 30 (mm)	规格 Specification	PCD (mm)	轴径 (mm)	轴径 (mm)	轴径 (mm)			
LH40000001AA	127	920	31545	PAH19-1	880	1815	7019	10"MQ2"1.1.850	285.73	231	810	2045	7.5V-20
LH4000001AA-05	127	11.500	43045	PAH20-1	880	1815	7019	10"MQ2"1.1.850	285.73	231	810	2045	8.0V-20
LH4000001AA-09	127	11.500	43045	PAH20-1	880	1815	7019	10"MQ2"1.1.850	285.73	231	810	2045	8.0V-20
LH4000001AA-30	127	11.500	43045	PAH20-1	880	1815	7019	10"MQ2"1.1.850	285.73	231	810	2045	8.0V-20
LH4000001AA-301	107/130	13.019	43045	PAH22-1	880	1815	7019	10"MQ2"1.1.850	285.73	231	810	2045	8.0V-20



Europe Type Disc Brake Axle  
欧式碟刹车桥

车型名称 Axle type	最大轴荷 100kN kg/ton	碟刹轴径 Disc brake mm	制动轴径 WABCO mm	轴间距 1219 mm	轴距 Type 30 mm	制动鼓规格 Wheel Firing			总长度 Total length (mm)	轴荷间距 Mounting width			
Model no.	Axis beam size (mm)	轴径 Type	制动轴径 WABCO (mm)	轴间距 mm	轴距 Type 30 (mm)	规格 Specification	PCD (mm)	轴径 (mm)	轴径 (mm)	轴径 (mm)			
LH60000001AA	145	920	43045	PAH19-1	1200/1300	2640	2942.6	10"MQ2"1.1.850	336	281	810	2400	22.8"11.75
LH60000001AA	145	920	43045	PAH20-1	1200/1300	2640	2942.6	10"MQ2"1.1.850	336	281	810	2400	22.8"11.75
LH60000002AA	145	920	43045	PAH20-1	1200/1300	2640	2942.6	10"MQ2"1.1.850	336	281	810	2400	22.8"11.75
LH60000003AA	145	920	43045	PAH20-1	1200/1300	2640	2942.6	10"MQ2"1.1.850	336	281	810	2400	22.8"11.75
LH60000004AA	145	920	43045	PAH20-1	1200/1300	2640	2942.6	10"MQ2"1.1.850	336	281	810	2400	22.8"11.75
LH60000005AA	145	920	43045	PAH20-1	1200/1300	2640	2942.6	10"MQ2"1.1.850	336	281	810	2400	22.8"11.75

**AXLE TUBE UBE**



美式光轴  
American Axle Beam

型号 Model	额定轴荷 Rated load (kg)	A(mm)	L(mm)	C	规格 Specifications	L2(mm)
LHA-127	13000	Φ86.5/Φ88.3	1623.3	3.48" - 12.5N	Φ127X16	2065.5
LHA-127	13000	Φ86.5/Φ88.3	1644	3.48" - 12.5N	158X158X12	2108
LHA-167	16000	Φ88.5/Φ90.3	1644	3.48" - 12.5N	158X158X15	2126
LHA-207	20000	Φ88.5/Φ110	1709	3.48" - 12.5N	158X158X19	2173

备注：轴管可根据客户要求定制

Remarks: Truck can be customized according to customer requirements.

德式光轴  
German Type Axle Beam

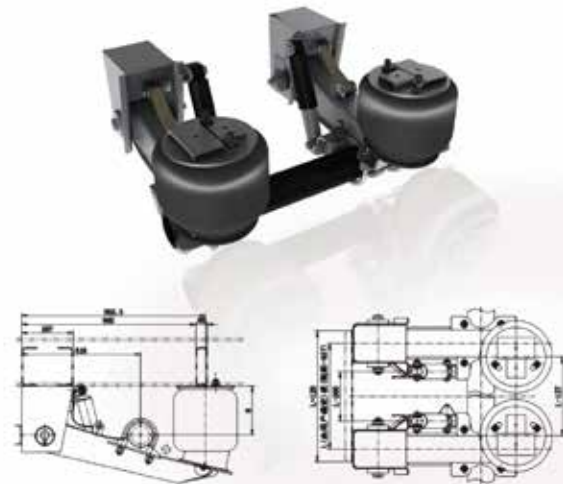


型号 Model	额定轴荷 Rated load (kg)	A(mm)	L(mm)	C	规格 Specifications	L2(mm)
LHG-127	13000	Φ75/Φ98	1662	M5202	150X150X12	2122
LHG-147	14000	Φ75/Φ98	1679	M6002	150X150X14	2155
LHG-167	16000	Φ75/Φ100	1655	M6002	150X150X16	2225

备注：轴管可根据客户要求定制

Remarks: Truck can be customized according to customer requirements.

**AMERICAN TYPE AIR SUSPENSION**



型号 Model	H (mm)	承载能力 Axle Load (kg)
LHMA813/200	203	13000
LHMA813/229	229	13000
LHMA813/254	254	13000
LHMA813/282	282	13000
LHMA813/301	301	13000
LHMA813/320	320	13000
LHMA813/340	340	13000
LHMA813/360	360	13000
LHMA813/380	380	13000

备注：可带提升，可配11吨车桥

Remarks: Able to be loaded with lifting and be equipped with 11ton axle

**GERMAN TYPE AIR SUSPENSION**

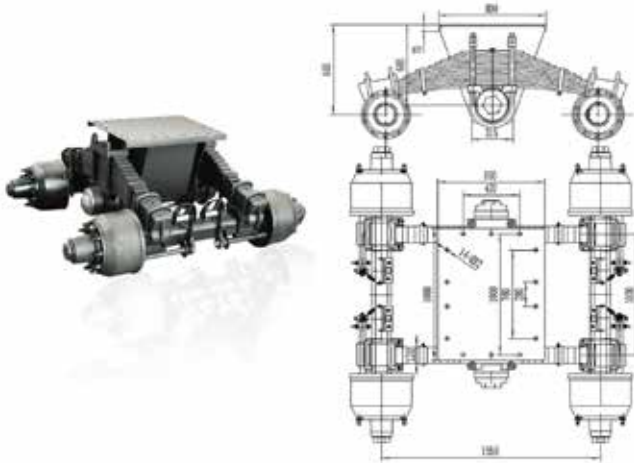


型号 Model	H (mm)	承载能力 Axle Load (kg)
LHGKA13/380	380	13000
LHGKA13/400	400	13000
LHGKA13/430	430	13000
LHGKA13/460	460	13000

备注：可带提升，可配12、10、8吨车桥

Remarks: Able to be loaded with lifting and be equipped with 12、10、8 tons axle

**BOGIE SUSPENSION**

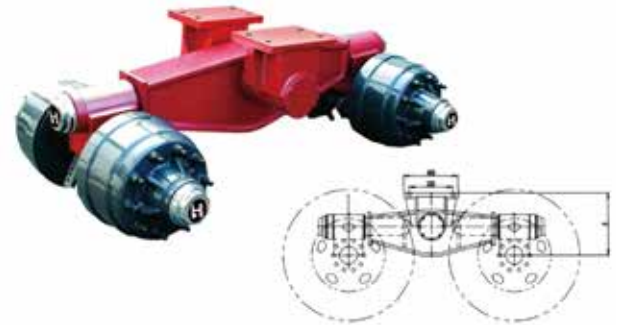


型号 Model	载重能力 Capacity (kg)	轴型 Bearing	轴管规格 Axle Tube (mm)	制动盘尺寸 Brake Linig Size	轴间距 (mm)	轴分布直径 (mm)	轴簧规格 Type Size	轴簧中心距 Wheel Turn Position	轴距 Track (mm)	轴簧中心距 Spring Center (mm)
LHC-24	24000		150*150*14	Φ4.0*200	1850	Φ115	10-M2*13	Φ260	1400	390
LHC-24	28000		150*150*14	Φ4.0*200	1850	Φ125	10-M2*15	Φ260	1550	300
LHC-24	32000		150*150*16	Φ4.0*200	1850	Φ125	10-M2*15	Φ260	1550	300

备注: 1. 可适配多种安装结构  
2. 可配合其他品牌圆/方车轴

Remarks: 1.Able to choose other installation structures  
2.Able to match round/square axles of other brands

**ARGO BOGIE SUSPENSION**



Model 型号	L (mm)	H (mm)	A (mm)	B (mm)	C (mm)	D (mm)
LH1-1220417	1220	457	1530	802	186	2914
LH1-1220330	1220	380	1530	802	186	2914
LH1-1220135	1220	335	1530	850	186	2914
LH1-1550457	1550	457	1762	955	298	3535
LH1-1550330	1550	380	1762	955	298	3535
LH1-1550138	1550	335	1762	955	298	3535

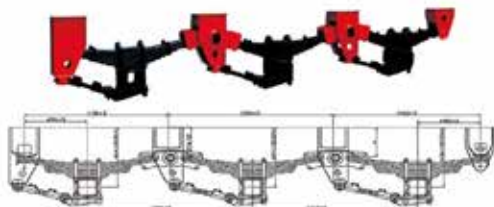
轴型号 Axle Type	载重能力 Level capacity (kg/20t/m²)	轴簧规格 1mm size	轴簧规格 2mm size
LH2010P4AA-032	40	6.5D-15	6.25R15
LH2010P4AA-032	40	6.5D-15	6.25R15
LH2010P4AA-032	40	6.5D-15	6.25R15
LH1520E1AA-061	60	8.0D-20	12.00R24
LH1520E1AA-061	60	8.0D-20	12.00R24
LH1520E1AA-061	60	8.0D-20	12.00R24

**AMERICAN TYPE SUSPENSION**



Tandem overslung Suspension

轴型号 Model	轴簧高度 Height of spring plate	A1(mm)	B1(mm)	A2(mm)	B2(mm)	轴簧规格 1mm Axle Load
LH-02-180	1180	473	443	465	435	180 16,000*2
LH-02-230	1230	523	493	515	485	230 16,000*2
LH-02-270	1270	563	533	555	525	270 16,000*2
LH-02-320	1320	613	583	605	575	320 16,000*2



Tridem overslung Suspension with ten leaf springs

轴型号 Model	轴簧高度 Height of spring plate	A1(mm)	B1(mm)	A2(mm)	B2(mm)	A3(mm)	B3(mm)	轴簧规格 1mm Axle Load
LH-03-180	1180	489	459	480	450	467	437	180 16,000*3
LH-03-230	1230	539	509	530	500	517	487	230 16,000*3
LH-03-270	1270	579	549	570	540	557	527	270 16,000*3
LH-03-320	1320	629	599	620	590	607	577	320 16,000*3

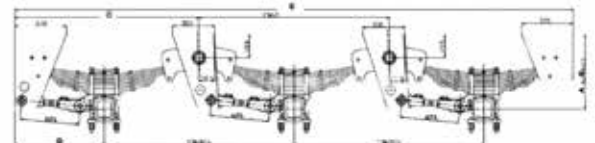
Note

1) Suspension axle space: 1300, 1310, 1310, 1360mm  
2) Height from center of equalizer pin to top bracket: 115-355mm  
3) Height of trailer towing plate: 1180mm, 1200mm, 1230mm, 1250mm, 1300mm  
4) Various suspension: 1 Axle suspension, 2 Axle suspension, 3 Axle suspension and 4 Axle suspension  
5) Leaf spring: 8 leaf, 9 leaf (20\*16), 10 leaf, 12 leaf, 60\*10 the quantity is optional  
6) Leaf spring width: 90mm, 120mm  
7) Equalizer pin: 55, 60, 70, 80mm  
8) Equalizer bush/axle/mount material  
9) Hanger: material Q235, thickness 8mm, for option  
10) Equalizer: thickness 10mm, 12mm for option  
11) Torque arm pin: 25mm, 35mm  
12) Torque arm bushing: rubber, iron, nylon  
13) Tank material: plate/casting steel

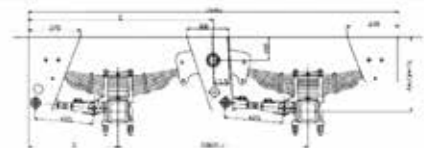
**GERMAN TYPE SUSPENSION**



German System Tri-axle Specification



German System Tandem-axle Specification

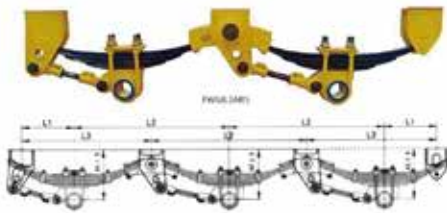
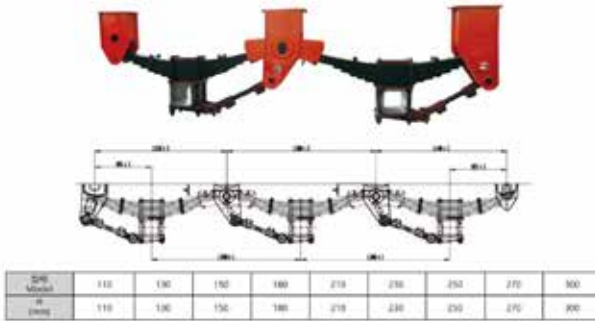


German Suspension System Specification

轴型号 Model	轴簧高度 H2: 01 spring height	轴簧规格 Spring thickness (mm)	A(mm)	B(mm)	C(mm)	D(mm)	E(mm)
LH-01-2500A	12	12	490	440	635	/	/
LH-01-2900B	14	12	535	465	636.5	/	/
LH-02-2900A	12	12	490	440	1320	636	/
LH-02-2900B	14	12	535	465	1318	636.5	/
LH-01-2900A	12	12	490	440	1320	636	4000
LH-02-2900C	14	12	535	465	1318	636.5	4010



**LIGHT DUTY SUSPENSION**



LH6L21 AP3 2.0MM (6475x13) 标准型(轴距) (8001300)

LH6L21 A83 To Superator With Light Leaf Springs 1300

LH6L32 AP3 2.0MM (6475x13) 标准型(轴距) (8001537)

LH6L32 A83 To Superator With Light Leaf Springs 1530

型号 Model	A1	A2	A3	L1	L2	L3	轴距 Wheel
LH6L21MM40S	440	440	440	458	1340	1130	11000*3
LH6L21MM40S	415	415	415	458	1340	1130	11000*3
LH6L21LL40S	290	290	290	458	1340	1130	11000*2
LH6L21ML40S	440	415	290	458	1340	1130	11000*3

**HUB/BRAKE DRUM**



Hub Specification

产品型号 Product Type	总高度 Total Height A	大轴孔 Big Bearing B	小轴孔 Small Bearing C	轴衬直径 P.C.D. D	最大轴孔 Max. Outside Dia. E	鼓凸位置 Brake Drum Position	螺栓 Thread F	螺栓孔 Bolt Position G	最大轴孔 Max. Outside Dia. H	鼓凸厚度 Flange Thickness I
LH03Z72A3.00	220	221.8	227.8	Φ235	Φ280	Φ290	M12x1.5	Φ240	Φ230	20
LH03Z72A7.00	205	221.8	227.8	Φ205	Φ229	Φ240	M12x1.5	Φ220	Φ129	20
LH03Z72A8.00	205	221.8	227.8	Φ205	Φ229	Φ240	M12x1.5	Φ220	Φ129	20
LH03Z72A9.00	205	221.8	227.8	Φ205	Φ280	Φ290	M12x1.5	Φ220	Φ180	20
LH03Z72A2.70	223	227.9	232.9	Φ235	Φ280	Φ290	M12x1.5	Φ280	Φ180	20
LH03Z126.12.0	286	322.2	327.4	Φ335	Φ380	Φ290	M12x1.5	Φ280	Φ300	21



Brake Drum Specification

产品型号 Product Type	鼓凸内径 Inner Dia. A	总高度 Height B	鼓凸宽度 Brake Width C	中心孔 Center Hole D	内径 P.C.D. E	螺栓 Bolt Quantity F	螺栓 Bolt Dimension G
LH30A23.00.01	Φ281	210	220	Φ278.5	Φ271	8	Φ25
LH30A23.11.01	Φ490	288	238	Φ278.5	Φ261.75	10	Φ24
LH30A23.00.01	Φ283	230	170	Φ278.5	Φ275	8	Φ25
LH30A23.11.01	Φ490	244	188	Φ278.5	Φ261.75	10	Φ24
LH30A23.01.01	Φ490	260	190	Φ268	Φ261	10.5	Φ23
LH30A23.06.01	Φ490	230	172	Φ268	Φ261	10.5	Φ23
LH30A23.04.01	Φ490	213.36	170.68	Φ268	Φ261	10	Φ23
LH30A23.04.01	Φ490	271	167	Φ268	Φ261	10.5	Φ23
LH30A23.04.01	Φ490	271	173	Φ268	Φ261	10.5	Φ23

**FIFTH WHEEL**



50吨轴重 纵吊型  
Fifth Wheel 2.5" Longitudinal Swing

型号 Model Number	高度 Height	最大轴重 Imposed Load (kg)	轴衬角度 Pitching Angle	整车重量 Complete Truck Weight (kg)
LH-Q200A-200	200	47000	11°	47000
LH-Q200B-180	180	42000	11°	42000
LH-Q200C-200	200	47000	11°	47000



50吨轴重 纵吊型  
Fifth Wheel 2.5" Longitudinal Swing

型号 Model Number	高度 Height	最大轴重 Imposed Load (kg)	轴衬角度 Pitching Angle	整车重量 Complete Truck Weight (kg)
LH-Q200A-110	110	42000	12°	45000
LH-Q200B-170	170	42000	12°	45000
LH-Q200C-180	180	42000	12°	45000

**FIFTH WHEEL**



50吨轴重 纵吊型 纵吊与横吊型  
Fifth Wheel 2" / 1.5" Cast Longitudinal Swing & Transversal Swing Series

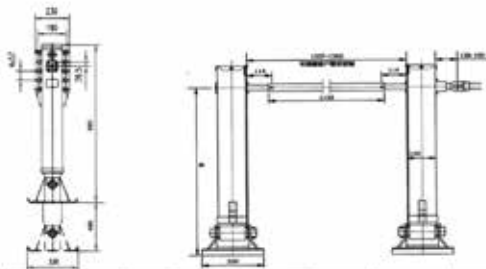
型号 Model Number	安装高度 Mounting Height (mm)	轴重 T-Value (kg)	最大轴重 Imposed Load (kg)	重量 Weight (kg)
LH-280-280-2"	280	42000	11°	327
LH-280-280-2"	280	42000	11°	327



50吨轴重 纵吊与横吊型  
Fifth Wheel / 1.5" Longitudinal Swing & Transversal Swing Series

型号 Model Number	高度 Height	最大轴重 Imposed Load (kg)	轴衬角度 Pitching Angle	轴衬角度 Transversal Swing	整车重量 Complete Truck Weight (kg)
LH-Q100-210	210	2000	12°	12°	41000

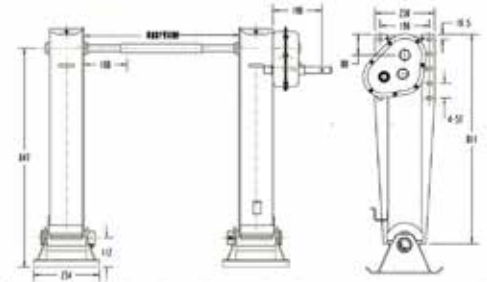
**INBOARD LANDING GEAR**



型号 Model number	静载荷 Static load (kg/441 l)	侧向载荷 Lift load (kg/441 l)	侧向载荷 Side load capacity (T)	最大行程 Maximum Lift D (mm)	收起高度 Closed Height Acme	收起时 High Gear per Turn of Handle (mm/3)	收起时 Low Gear per Turn of Handle (mm/3)	标准重量 Standard Weight (kg)
LH-542101T	80	25	12	480	840	6	0.27	54
LH-542111T	80	25	12	480	791	6	0.27	50
LH-542101T	80	28	13	480	840	6	0.47	56
LH-542111T	80	28	13	480	791	6	0.47	54
LH-550401T	80	30	14	480	840	7.5	0.71	54
LH-550401T	80	30	14	430	790	7.5	0.71	50

- 备注：1.多种型号可选。  
2.多种规格可选。  
3.多种型号和规格尺寸可选，满足客户需求。  
4.单侧操作可选。
- Note: 1. Multi-type shoes are available for different usage.  
2. Optional lifts are available.  
3. Optional mounting and connecting dimensions are available to meet your requirements.  
4. Two-side operation landing gear is available.

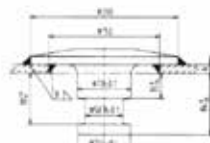
**OUTBOARD LANDING GEAR**



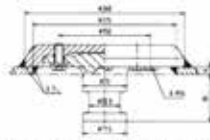
型号 Model number	静载荷 Static load (kg/441 l)	侧向载荷 Lift load capacity (T)	侧向载荷 Side load capacity (T)	最大行程 Maximum Lift D (mm)	收起高度 Closed Height Acme	收起时 High Gear per Turn of Handle (mm/3)	收起时 Low Gear per Turn of Handle (mm/3)	标准重量 Standard Weight (kg)
LH-521401T	80	25	12	480	844	6.42	0.72	130
LH-521401T	80	28	13	480	844	6.42	0.72	130
LH-522401T	80	25	12	480	834	11.25	1	305
LH-522401T	80	28	13	480	850	11.25	1	332
LH-521401T	80	35	14	480	840	6.42	0.72	136
LH-521401T	80	35	14	430	785	6.42	0.72	128

- 备注：1.多种型号可选。  
2.多种规格可选。  
3.多种型号和规格尺寸可选，满足客户需求。  
4.单侧操作可选。
- Note: 1. Multi-type shoes are available for different usage.  
2. Optional lifts are available.  
3. Optional mounting and connecting dimensions are available to meet your require.  
4. Two-side operation landing gear is available.

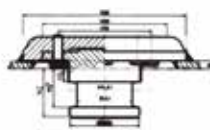
**KING PIN**



Note: 2024系列，轴式上球面衬套为内六角螺栓，不得重复使用，拧紧力矩为100N.m  
2024 Type, All the bolts used in ball joint pin are one-off check bolts, so they can not be reused. Pre-tightening torque is 100N.m.

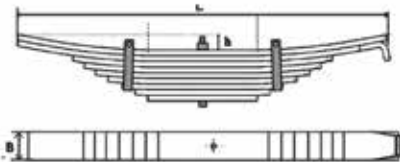


Note: 2024系列，轴式上球面衬套为内六角螺栓，不得重复使用，拧紧力矩为100N.m  
2024 Type, All the bolts used in ball joint pin are one-off check bolts, so they can not be reused. Pre-tightening torque is 100N.m.



名称 Description	型号 Model Number	球面厚度 Sleeve Plate Thickness(k)
2" 焊接式衬套 2" Welding King Pin	LH-K005-08	8mm
2" 焊接式衬套 2" Welding King Pin	LH-K005-10	10mm
2" 焊接式衬套 2" Welding King Pin	LH-K005-12	12mm
2" 轴式衬套 2" Ballon King Pin	LH-K210-08	8mm
2" 轴式衬套 2" Ballon King Pin	LH-K210-10	10mm
2" 轴式衬套 2" Ballon King Pin	LH-K210-12	12mm
3.5" 轴式衬套 3.5" Ballon King Pin	LH-K250-08	8mm
3.5" 轴式衬套 3.5" Ballon King Pin	LH-K250-10	10mm
3.5" 轴式衬套 3.5" Ballon King Pin	LH-K250-12	12mm
4.5" 轴式衬套 4.5" Ballon King Pin	LH-K290-14	14mm
4.5" 轴式衬套 4.5" Ballon King Pin	LH-K290-16	16mm

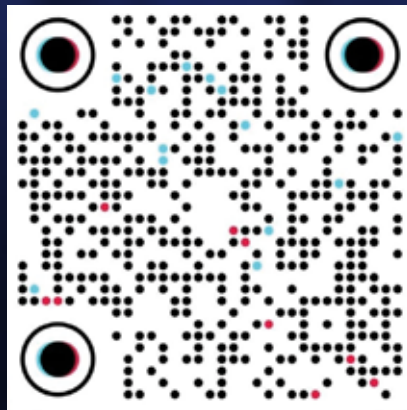
**LEAF SPRING**



型号 Model number	总长 Chord length (mm)	轴高 Chord height (mm)	片数 Total pieces	片厚度 Thickness (mm)	重量 Weight (mm)	标准重量 Standard Weight (kg)
LH13-90-10	1130	80	10	13	90	71
LH13-90-13	1130	80	13	13	90	76
LH12-100-12	1125	80	12	12	100	83
LH16-75-10	1130	80	10	16	75	71
LH16-90-9	1175	80	9	16	90	79


# **JYO**

IMPORTACIONES



   [jyo.importaciones](https://www.jyoimportaciones.com)

 **973 439 197**

 **Pje. George Bernard Shaw, cuadra 1.  
Urb. La Capullana - Surco.**

[www.jyoimportaciones.com](http://www.jyoimportaciones.com)